

PUMPS AND VALVES



African
Hose
Solutions



069 962 1589



010 065 387 2 / 3 / 4



Admin@AfricanHoseSolutions.co.za

Section G

Pumps and Valves



African
Hose
Solutions



INDEX

| | PRODUCT | PAGE |
|-------------------|--|------|
| PUMPS | 1SPA - GROUP 1 GEAR PUMPS | 5 |
| | 2SPA - GROUP 2 GEAR PUMPS | 5 |
| | 3SPA - GROUP 3 GEAR PUMPS | 6 |
| | KCBTS - KAUFMANN GROUP 2 GEAR PUMPS | 6 |
| MOTORS | 2SMA - GROUP 2 GEAR MOTORS | 7 |
| | OHM - ORBITAL MOTORS | 7 |
| VALVES | MBV - MONOBLOCK VALVES | 8 |
| | SV - SECTIONAL VALVES | 8 |
| | VA - VALVE ACCESSORIES | 9 |
| INLINE COMPONENTS | BKHR - BALL VALVES | 10 |
| | VU - INLINE CHECK VALVE | 10 |
| | VMP - INLINE RELIEF VALVE | 11 |
| | FMRV - FACE MOUNTED RELIEF VALVE | 11 |
| | VAU - DUAL CROSS OVER RELIEF VALVE | 11 |
| | VAUAC - DUAL CROSS RELIEF VALVE WITH ANTI-CAVITATION | 12 |
| | VU2P - SHUTTLE VALVE | 12 |
| | VUI - INTEGRATED CHECK VALVE | 12 |
| | VUBA- HOSE BRAKE VALVE | 13 |
| | ESVNO - END STROKE VALVE NORMALLY OPEN | 13 |
| | DF3 - DIVERTER VALVE | 13 |
| | VABP - TWO PUMP HI-LOW UNLOADING VALVE | 14 |
| | DASV - DIRECT ACTING SEQUENCE VALVES | 14 |
| | DFL - FLOW DIVIDER | 14 |



INDEX

| | PRODUCT | PAGE |
|-------------------------------|--|------|
| INLINE COMPONENTS | UDNV - UNI-DIRECTIONAL NEEDLE VALVE + PRESSURE COMPENSATED | 15 |
| | BDNV- BI-DIRECTIONAL NEEDLE VALVE | 15 |
| | UDBV - UNI-DIRECTIONAL BARREL FLOW CONTROL VALVE | 15 |
| | UDNVCOMP - UNI-DIRECTIONAL NEEDLE VALVE - PRESSURE COMPENSATED | 16 |
| | VPR3 - 3 PORT FLOW CONTROL VALVE - ONGOING PRESSURE LINE | 16 |
| | RFP3 - THREE PORT FLOW CONTROL VALVE - EXCESS TO TANK | 16 |
| | SOCV - SINGLE OVER CENTRE VALVE | 17 |
| | DOCV - DOUBLE OVER CENTRE VALVE | 17 |
| | VBPDE - DOUBLE PILOT OPERATED CHECK VALVE | 17 |
| | VBPSL - SINGLE PILOT OPERATED CHECK VALVE - 1 LINE | 18 |
| | VBPSE - SINGLE PILOT OPERATED CHECK VALVE - 2 LINES | 18 |
| | VBPSEMISO - SINGLE PILOT OPERATED CHECK VALVE WITH MANUAL SHUT OFF | 18 |
| | VBLSE - SINGLE PILOT OPERATED CHECK VALVE - HIGH PILOT | 19 |
| | GGL - INLINE ROTATING COUPLINGS | 19 |
| | GGL90 - 90 DEGREE INLINE ROTATING COUPLINGS | 19 |
| | 111 - LOW PRESSURE BALL VALVE | 20 |
| | MBV - MINI BALL VALVE | 20 |
| | NRVB - LOW PRESSURE CHECK VALVE | 20 |
| 157 - LOW PRESSURE GATE VALVE | 20 | |
| PUMP ACCESSORIES | PF - PORT FLANGES | 21 |
| | BH - BELL HOUSINGS | 22 |
| | DC - DRIVE COUPLINGS | 22 |



INDEX

| | PRODUCT | PAGE |
|------------------|----------------------------------|------|
| TANK ACCESSORIES | PL/T - LEVEL GAUGES | 23 |
| | TLA - SIGHT GLASSES | 23 |
| | TCAR - FILLING PLUGS | 23 |
| | TCF - FILLING PLUG WITH BREATHER | 23 |
| | FMC - MAGNETIC FILTER ROD | 23 |
| SOLENOID VALVES | FT3 - NG6 SOLENOID VALVES | 24 |
| | FT3 - NG6 STACKABLE VALVES | 24 |
| | FT3 - NG6 MANIFOLD BLOCKS | 24 |
| | FT5 - NG10 SOLENOID VALVES | 25 |
| | FT5 - NG10 STACKABLE VALVES | 25 |
| | FT5 - NG10 MANIFOLD BLOCKS | 25 |
| PP | TANKS | 26 |
| | POWER PACKS | 26 |



GEAR PUMPS

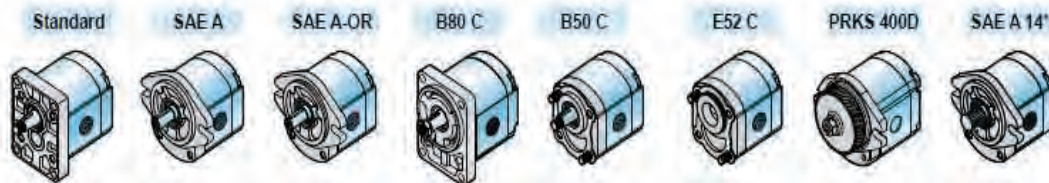
1SPA - GROUP 1 GEAR PUMPS

| Part No. | Displacement | Cont. Max. Press. | Max Peak Press. | Max. Speed | Max. Flow |
|----------|--------------|-------------------|-----------------|------------|--------------|
| 1SPA-0.9 | 0.89cc | 260 bar | 290 bar | 6000 rpm | 5.3 ltr/min |
| 1SPA-1.2 | 1.18cc | 260 bar | 290 bar | 6000 rpm | 7.1 ltr/min |
| 1SPA-1.6 | 1.6cc | 260 bar | 290 bar | 6000 rpm | 9.6 ltr/min |
| 1SPA-2.0 | 2.0cc | 260 bar | 290 bar | 5500 rpm | 11.0 ltr/min |
| 1SPA-2.5 | 2.5cc | 260 bar | 290 bar | 5000 rpm | 12.5 ltr/min |
| 1SPA-3.2 | 3.2cc | 260 bar | 290 bar | 4500 rpm | 14.4 ltr/min |
| 1SPA-3.7 | 3.7cc | 250 bar | 280 bar | 4000 rpm | 14.8 ltr/min |
| 1SPA-4.2 | 4.2cc | 250 bar | 280 bar | 3500 rpm | 14.7 ltr/min |
| 1SPA-5.0 | 5.0cc | 250 bar | 280 bar | 3000 rpm | 15.0 ltr/min |
| 1SPA-6.3 | 6.3cc | 170 bar | 210 bar | 2700 rpm | 17.0 ltr/min |
| 1SPA-7.8 | 7.76cc | 170 bar | 210 bar | 2500 rpm | 19.4 ltr/min |
| 1SPA-9.8 | 9.78cc | 150 bar | 190 bar | 2000 rpm | 19.6 ltr/min |



2SPA - GROUP 2 GEAR PUMPS

| Part No. | Displacement | Cont. Max. Press. | Max Peak Press. | Max. Speed | Max. Flow |
|-------------|--------------|-------------------|-----------------|------------|--------------|
| 2SPA - 4.0 | 4.0cc | 270 bar | 290 bar | 4000 rpm | 16.0 ltr/min |
| 2SPA - 6.0 | 6.0cc | 270 bar | 290 bar | 4000 rpm | 24.0 ltr/min |
| 2SPA - 8.0 | 8.5cc | 270 bar | 290 bar | 3500 rpm | 29.7 ltr/min |
| 2SPA - 11.0 | 11.0cc | 270 bar | 290 bar | 3500 rpm | 38.5 ltr/min |
| 2SPA - 14.0 | 14.0cc | 270 bar | 290 bar | 3500 rpm | 49.0 ltr/min |
| 2SPA - 16.0 | 16.5cc | 240 bar | 250 bar | 3500 rpm | 57.7 ltr/min |
| 2SPA - 19.0 | 19.5cc | 220 bar | 230 bar | 3300 rpm | 64.3 ltr/min |
| 2SPA - 22.0 | 22.5cc | 190 bar | 210 bar | 2800 rpm | 63.0 ltr/min |
| 2SPA - 26.0 | 26.0cc | 170 bar | 190 bar | 2500 rpm | 65.0 ltr/min |

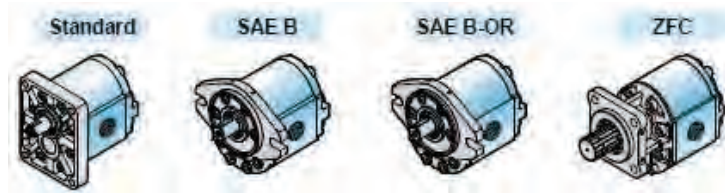


African
Hose
Solutions

GEAR PUMPS

3GPA - GROUP 3 GEAR PUMPS

| Part No. | Displacement | Cont. Max. Press. | Max Peak Press. | Max. Speed | Max. Flow |
|--------------------|--------------|-------------------|-----------------|------------|---------------|
| 3GPA - 19.0 | 19.3cc | 250 bar | 280 bar | 3500 rpm | 66.5 ltr/min |
| 3GPA - 23.0 | 23.0cc | 250 bar | 280 bar | 3500 rpm | 78.0 ltr/min |
| 3GPA - 30.0 | 30.2cc | 240 bar | 270 bar | 3300 rpm | 96.7 ltr/min |
| 3GPA - 34.0 | 33.8cc | 240 bar | 270 bar | 3300 rpm | 108.6 ltr/min |
| 3GPA - 37.0 | 37.5cc | 230 bar | 260 bar | 3300 rpm | 120.1 ltr/min |
| 3GPA - 44.0 | 44.6cc | 220 bar | 250 bar | 3000 rpm | 130.5 ltr/min |
| 3GPA - 53.0 | 53.0cc | 210 bar | 240 bar | 3000 rpm | 155.1 ltr/min |
| 3GPA - 62.0 | 62.7cc | 190 bar | 210 bar | 2500 rpm | 152.7 ltr/min |



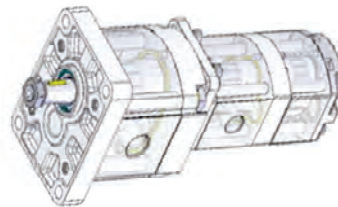
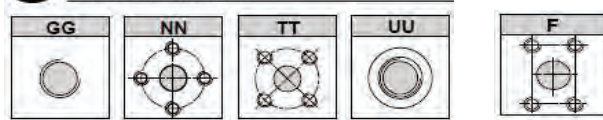
KAUFMANN - GROUP 2 GEAR PUMPS

| Part No. | Displacement | Cont. Max. Press. | Max Peak Press. | Max. Speed | Max. Flow |
|----------------|--------------|-------------------|-----------------|------------|--------------|
| KCBTS-F304L6Z1 | 4.0cc | 280 bar | 320 bar | 4000 rpm | 16.0 ltr/min |
| KCBTS-F306L6Z1 | 6.0cc | 280 bar | 320 bar | 4000 rpm | 24.0 ltr/min |
| KCBTS-F308L6Z1 | 8.00cc | 280 bar | 320 bar | 3500 rpm | 29.7 ltr/min |
| KCBTS-F310L6Z1 | 10.00cc | 280 bar | 320 bar | 3500 rpm | 38.5 ltr/min |
| KCBTS-F314L6Z1 | 14.00cc | 270 bar | 290 bar | 3500 rpm | 49.0 ltr/min |
| KCBTS-F316L6Z1 | 16.00cc | 230 bar | 250 bar | 3500 rpm | 57.7 ltr/min |
| KCBTS-F320L6Z1 | 20.00cc | 210 bar | 230 bar | 3300 rpm | 64.3 ltr/min |
| KCBTS-F325L6Z1 | 25.00cc | 190 bar | 210 bar | 2800 rpm | 63.0 ltr/min |

*Pump accessories available on request

*Multiple Gear Pumps available in 2 or more stages

Conn Connessioni / Connections



African
Hose
Solutions

GEAR MOTORS

2SMA - GROUP 2 GEAR MOTORS

| Part No. | Displacement | Cont. Max. Pres. | Max Peak Pres. | Max. Speed | Max. Flow |
|--------------------|--------------|------------------|----------------|------------|---------------|
| 2SMA - 4.0 | 4.0cc | 230 bar | 230 bar | 4000 rpm | 1.90 ltr/min |
| 2SMA - 6.0 | 6.0cc | 230 bar | 270 bar | 4000 rpm | 2.85 ltr/min |
| 2SMA - 8.0 | 8.5cc | 230 bar | 230 bar | 3500 rpm | 4.03 ltr/min |
| 2SMA - 11.0 | 11.0cc | 230 bar | 230 bar | 3500 rpm | 5.22 ltr/min |
| 2SMA - 14.0 | 14.0cc | 230 bar | 230 bar | 3500 rpm | 6.65 ltr/min |
| 2SMA - 16.0 | 16.5cc | 230 bar | 240 bar | 3500 rpm | 7.83 ltr/min |
| 2SMA - 19.0 | 19.5cc | 185 bar | 185 bar | 3300 rpm | 9.26 ltr/min |
| 2SMA - 22.0 | 22.5cc | 170 bar | 170 bar | 2800 rpm | 10.68 ltr/min |
| 2SMA - 26.0 | 26.0cc | 150 bar | 155 bar | 2500 rpm | 12.35 ltr/min |



ORBITAL MOTORS

OHM - ORBITAL MOTORS

| Part No | Description |
|-----------------------------|--|
| BMR-50P41AIIY10/T10 | 50cc Orbital Hydraulic Motor - 25mm Keyed Shaft - 82.50mm Spigot - 1/2" Ports |
| BMR-80P41AIIY10/T10 | 80cc Orbital Hydraulic Motor - 25mm Keyed Shaft - 82.50mm Spigot - 1/2" Ports |
| BMR-100P41AIIY10/T10 | 100cc Orbital Hydraulic Motor - 25mm Keyed Shaft - 82.50mm Spigot - 1/2" Ports |
| BMR-160P41AIIY10/T10 | 160cc Orbital Hydraulic Motor - 25mm Keyed Shaft - 82.50mm Spigot - 1/2" Ports |
| BMR-200P41AIIY10/T10 | 200cc Orbital Hydraulic Motor - 25mm Keyed Shaft - 82.50mm Spigot - 1/2" Ports |
| BMR-315P41AIIY10/T10 | 315cc Orbital Hydraulic Motor - 25mm Keyed Shaft - 82.50mm Spigot - 1/2" Ports |



African
Hose
Solutions

VALVES

MBV - MONOBLOCK VALVES

| Part No | Description |
|---------|--|
| Q1501 | Q1501 - 1/4" Single Bank Double Acting Valve |
| Q2501 | Q2501 - 3/8" Single Bank Double Acting Valve (1/2" Outlet) |
| Q2502 | Q2502 - 3/8" Two Bank Double Acting Valve (1/2" Outlet) |
| Q2503 | Q2503 - 3/8" Three Bank Double Acting Valve (1/2" Outlet) |
| Q2504 | Q2504 - 3/8" Four Bank Double Acting Valve (1/2" Outlet) |
| Q2505 | Q2505 - 3/8" Five Bank Double Acting Valve (1/2" Outlet) |
| Q2506 | Q2506 - 3/8" Six Bank Double Acting Valve (1/2" Outlet) |
| Q2507 | Q2507 - 3/8" Seven Bank Double Acting Valve (1/2" Outlet) |
| Q3501 | Q3501 - 3/8" Single Bank Double Acting Valve |
| Q4501 | Q4501 - 1/2" Single Bank Double Acting Valve |
| Q4502 | Q4502 - 1/2" Two Bank Double Acting Valve |
| Q4503 | Q4503 - 1/2" Three Bank Double Acting Valve |
| Q4504 | Q4504 - 1/2" Four Bank Double Acting Valve |
| Q4505 | Q4505 - 1/2" Five Bank Double Acting Valve |
| Q4506 | Q4506 - 1/2" Six Bank Double Acting Valve |
| Q4507 | Q4507 - 1/2" Seven Bank Double Acting Valve |
| Q7501 | Q7501 - 1/2" Single Bank Double Acting Valve (3/4" Outlet) |
| Q7502 | Q7502 - 1/2" Two Bank Double Acting Valve (3/4" Outlet) |
| Q7503 | Q7503 - 1/2" Three Bank Double Acting Valve (3/4" Outlet) |
| Q7504 | Q7504 - 1/2" Four Bank Double Acting Valve (3/4" Outlet) |
| Q7505 | Q7505 - 1/2" Five Bank Double Acting Valve (3/4" Outlet) |
| Q7506 | Q7506 - 1/2" Six Bank Double Acting Valve (3/4" Outlet) |
| Q9501 | Q9501 - 3/4" Single Bank Double Acting Valve |
| Q9502 | Q9502 - 3/4" Two Bank Double Acting Valve |
| Q9503 | Q9503 - 3/4" Three Bank Double Acting Valve |

SV - SECTIONAL VALVES

| Valve | Q30 - 40 ltr/min | Q50 - 60 ltr/min | Q80 - 90 ltr/min | Q130 - 150 ltr/min |
|----------------------------|----------------------|----------------------|----------------------|--------------------|
| Description | 3/8" Sectional Valve | 1/2" Sectional Valve | 1/2" Sectional Valve | 1" Sectional Valve |
| Return Port | 1/2" | 1/2" | 3/4" | 1" |
| | Part No. | Part No. | Part No. | Part No. |
| Inlet | Q30-IN | Q50-IN | Q80-IN | Q130-IN |
| Standard Section | Q30-STND | Q50-STND | Q80-STND | Q130-STND |
| Port Relief Section | Q30-PR | Q50-PR | Q80-PR | Q130-PR |
| Outlet | Q30-OUT | Q50-OUT | Q80-OUT | Q130-OUT |

* Power Beyonds and Closed Centre Plugs available upon request

* Single Acting and Motor Spools available upon request

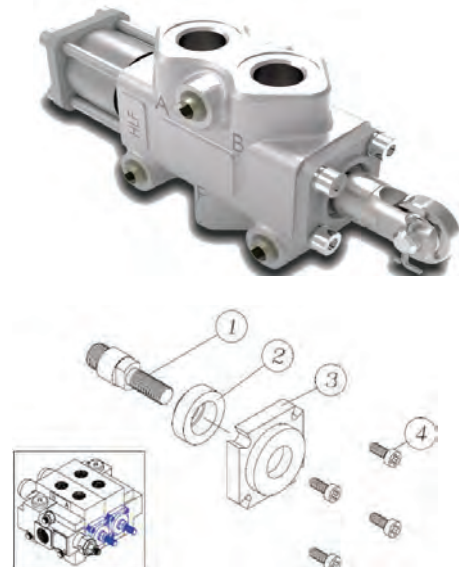
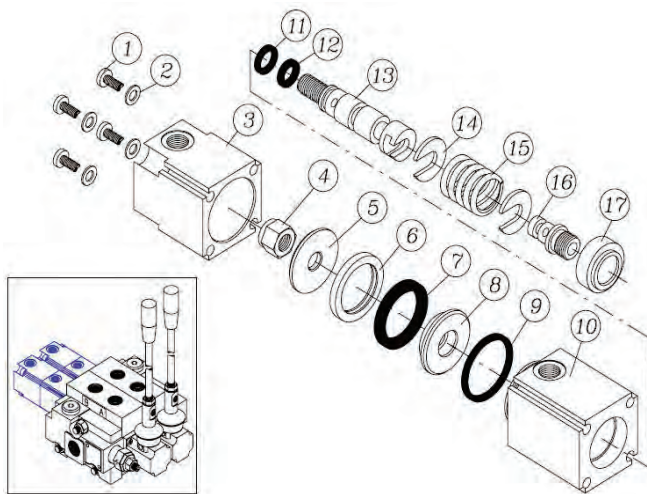


African
Hose
Solutions

VALVE ACCESSORIES

VA - VALVE ACCESSORIES

| Part No | Description |
|-------------|---|
| Q25-50R1 | Detent in "A", Spring Centred in "B" for Q25-50 |
| Q25-50R2 | Spring Centred in "A", Detent in "B" for Q25-50 |
| Q25-50R3 | Detent in "A", Detent in "B" for Q25-50 |
| Q25-50R4 | Detent in "A", No "B" Position for Q25-50 |
| Q25-50R5 | No "A" Position, Detent in "B" for Q25-50 |
| Q25-50R6 | Detent in "A", Detent in "B", No Neutral Position for Q25-50 |
| Q75-95R1 | Detent in "A", Spring Centred in "B" for Q75-95 |
| Q75-95R2 | Spring Centred in "A", Detent in "B" for Q75-95 |
| Q75-95R3 | Detent in "A", Detent in "B" for Q75-95 |
| Q75-95R4 | Detent in "A", No "B" Position for Q75-95 |
| Q75-95R5 | No "A" Position, Detent in "B" for Q75-95 |
| Q75-95R6 | Detent in "A", Detent in "B", No Neutral Position for Q75-95 |
| Q25-50H1 | 3 Position - Pilot Operated High Pressure Hydraulic Control |
| Q25-50H5 | 3 Position - Pilot Operated Low Pressure Hydraulic Control |
| Q25-50RTL | 3 Position with Clutched Rotary Control |
| Q75-95H1 | 3 Position - Pilot Operated High Pressure Hydraulic Control |
| Q75-95H5 | 3 Position - Pilot Operated Low Pressure Hydraulic Control |
| Q25-50M1U1 | 3 Position - Connection on Spool for Stiff Remote Control |
| Q75-95M1U1 | 3 Position - Connection on Spool for Stiff Remote Control |
| Q25-50A15-R | Lever for Simultaneous Control of 2 Spools - Attached by Either Port - Cloche Lever |
| IF-06-C3 | 3/8" Flow Diverter Valve - Cam Controlled with Bearing |
| IF-08-C3 | 1/2" Flow Diverter Valve - Cam Controlled with Bearing |
| IF-12-C3 | 3/4" Flow Diverter Valve - Cam Controlled with Bearing |

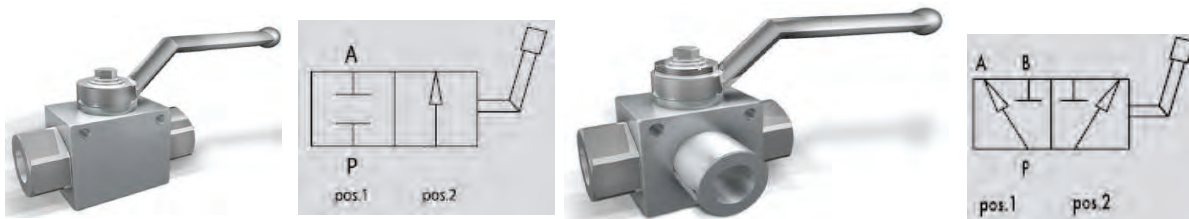


African
Hose
Solutions

INLINE COMPONENTS

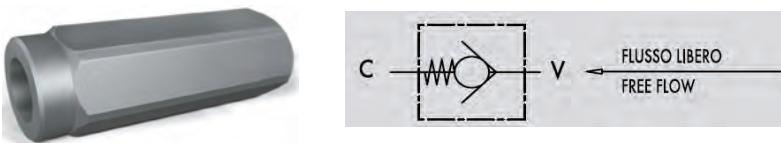
BKHR - BALL VALVES

| Part No | Description |
|----------|--|
| BKHR-04 | 1/4" Two Way Ball Valve |
| BKHR-06 | 3/8" Two Way Ball Valve |
| BKHR-08 | 1/2" Two Way Ball Valve |
| BKHR-12 | 3/4" Two Way Ball Valve |
| BKHR-16 | 1" Two Way Ball Valve |
| BKHR-20 | 1 1/4" Two Way Ball Valve |
| BKHR-24 | 1 1/2" Two Way Ball Valve |
| BKHR-32 | 2" Two Way Ball Valve |
| BKHR3-04 | 1/4" Three Way Ball Valve - "L" Port |
| BKHR3-06 | 3/8" Three Way Ball Valve - "L" Port |
| BKHR3-08 | 1/2" Three Way Ball Valve - "L" Port |
| BKHR3-12 | 3/4" Three Way Ball Valve - "L" Port |
| BKHR3-16 | 1" Three Way Ball Valve - "L" Port |
| BKHR3-20 | 1 1/4" Three Way Ball Valve - "L" Port |
| BKHR3-24 | 1 1/2" Three Way Ball Valve - "L" Port |



VU - INLINE CHECK VALVE

| Part No | Description |
|---------|--------------------|
| VU-04 | 1/4" Check Valve |
| VU-06 | 3/8" Check Valve |
| VU-08 | 1/2" Check Valve |
| VU-12 | 3/4" Check Valve |
| VU-16 | 1" Check Valve |
| VU-20 | 1 1/4" Check Valve |
| VU-24 | 1 1/2" Check Valve |
| VU-32 | 2" Check Valve |

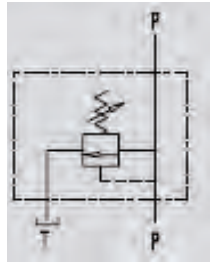


African
Hose
Solutions

INLINE COMPONENTS

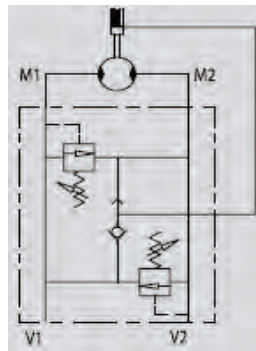
VMP - INLINE RELIEF VALVE

| Part No | Description |
|---------------|--------------------------|
| VMP-06 | 3/8" Inline Relief Valve |
| VMP-08 | 1/2" Inline Relief Valve |
| VMP-12 | 3/4" Inline Relief Valve |
| VMP-16 | 1" Inline Relief Valve |



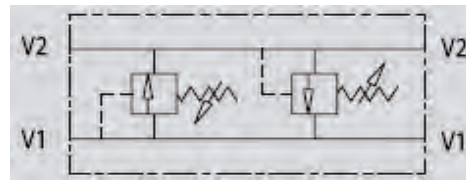
FMRV - FACE MOUNTED RELIEF VALVE

| Part No | Description |
|----------------|--------------------------------|
| FMRV-08 | 1/2" Face Mounted Relief Valve |



VAU - DUAL CROSS OVER RELIEF VALVE

| Part No | Description |
|---------------|-----------------------------------|
| VAU-06 | 3/8" Dual Cross Over Relief Valve |
| VAU-08 | 1/2" Dual Cross Over Relief Valve |

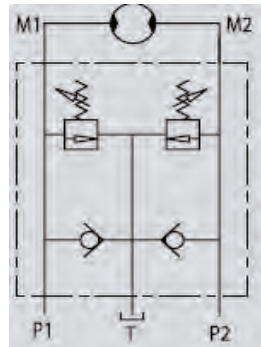


African
Hose
Solutions

INLINE COMPONENTS

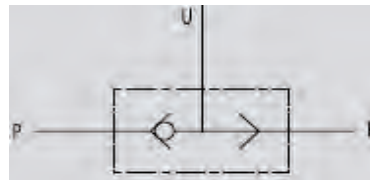
VAUAC - DUAL CROSS RELIEF VALVE WITH ANTI-CAVITATION

| Part No | Description |
|-----------------|--|
| VAUAC-08 | 1/2" Dual Cross Relief Valve with Anti- Cavitation |
| VAUAC-12 | 3/4" Dual Cross Relief Valve with Anti- Cavitation |



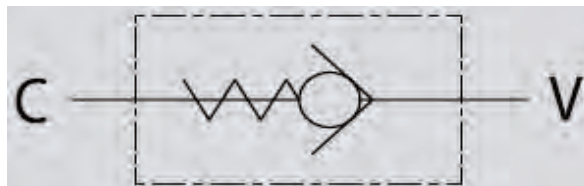
VU2P - SHUTTLE VALVE

| Part No | Description |
|----------------|--------------------|
| VU2P-04 | 1/4" Shuttle Valve |
| VU2P-06 | 3/8" Shuttle Valve |
| VU2P-08 | 1/2" Shuttle Valve |
| VU2P-12 | 3/4" Shuttle Valve |



VUI - INTEGRATED CHECK VALVE

| Part No | Description |
|---------------|-----------------------------|
| VUI-04 | 1/4" Integrated Check Valve |
| VUI-06 | 3/8" Integrated Check Valve |



African
Hose
Solutions

INLINE COMPONENTS

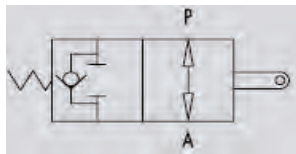
VUBA - HOSE BRAKE VALVE

| Part No | Description |
|----------|-------------------------------------|
| VUBAS-04 | 1/4" Hose Break Valve - Socket |
| VUBAS-06 | 3/8" Hose Break Valve - Socket |
| VUBAS-08 | 1/2" Hose Break Valve - Socket |
| VUBAS-12 | 3/4" Hose Break Valve - Socket |
| VUBAS-16 | 1" Hose Break Valve - Socket |
| VUBA-04 | 1/4" Hose Break Valve - Male/Female |
| VUBA-06 | 3/8" Hose Break Valve - Male/Female |
| VUBA-08 | 1/2" Hose Break Valve - Male/Female |
| VUBA-12 | 3/4" Hose Break Valve - Male/Female |
| VUBA-16 | 1" Hose Break Valve - Male/Female |
| VUBAC-04 | 1/4" Hose Break Valve Cartridge |
| VUBAC-06 | 3/8" Hose Break Valve Cartridge |
| VUBAC-08 | 1/2" Hose Break Valve Cartridge |
| VUBAC-12 | 3/4" Hose Break Valve Cartridge |
| VUBAC-16 | 1" Hose Break Valve Cartridge |



ESVNO - END STROKE VALVE NORMALLY OPEN

| Part No | Description |
|----------|-------------------------------------|
| ESVNO-08 | 1/2" End Stroke Valve Normally Open |



DF3 - DIVERTER VALVE

| Part No | Description |
|---------|-------------------------------|
| DF3-06 | 3/8" Three Way Diverter Valve |
| DF3-08 | 1/2" Three Way Diverter Valve |
| DF3-12 | 3/4" Three Way Diverter Valve |
| DF3-16 | 1" Three Way Diverter Valve |

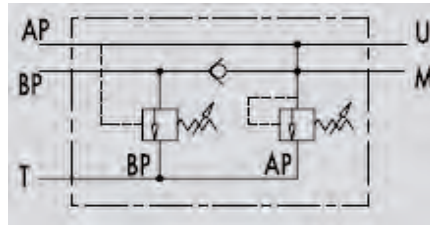


African
Hose
Solutions

INLINE COMPONENTS

VABP - TWO PUMP HI-LOW UNLOADING VALVE

| Part No | Description |
|---------|--------------------------------------|
| VABP-12 | 3/4" Two Pump Hi-Low Unloading Valve |

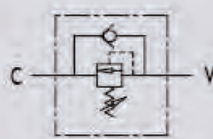


DASV - DIRECT ACTING SEQUENCE VALVES

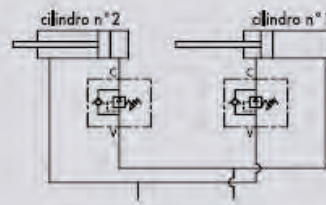
| Part No | Description |
|---------|------------------------------------|
| DASV-06 | 3/8" Direct Acting Sequence Valves |
| DASV-08 | 1/2" Direct Acting Sequence Valves |
| DASV-12 | 3/4" Direct Acting Sequence Valves |



HYDRAULIC DIAGRAM

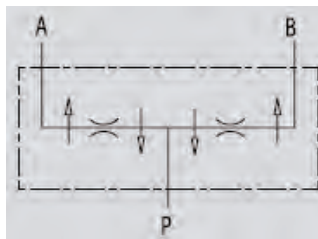


APPLICATION SCHEME



DFL - FLOW DIVIDER

| Part No | Description |
|---------|---|
| DFL-06 | 3/8" Flow Divider - 50/50 Fixed - 24ltr/min |
| DFL-08 | 1/2" Flow Divider - 50/50 Fixed - 40ltr/min |
| DFL-12 | 3/4" Flow Divider - 50/50 Fixed - 90ltr/min |
| DFL-16 | 1" Flow Divider - 50/50 Fixed - 150ltr/min |

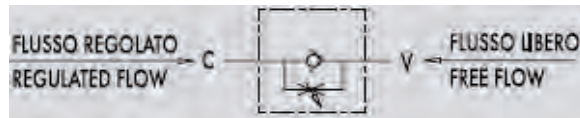


African
Hose
Solutions

INLINE COMPONENTS

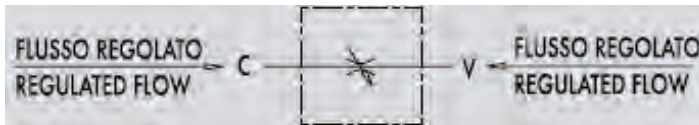
UDNV - UNI-DIRECTIONAL NEEDLE VALVE

| Part No | Description |
|----------------|-----------------------------------|
| UDNV-04 | 1/4" Uni-Directional Needle Valve |
| UDNV-06 | 3/8" Uni-Directional Needle Valve |
| UDNV-08 | 1/2" Uni-Directional Needle Valve |
| UDNV-12 | 3/4" Uni-Directional Needle Valve |
| UDNV-16 | 1" Uni-Directional Needle Valve |



BDNV- BI-DIRECTIONAL NEEDLE VALVE

| Part No | Description |
|----------------|----------------------------------|
| BDNV-04 | 1/4" Bi-Directional Needle Valve |
| BDNV-06 | 3/8" Bi-Directional Needle Valve |
| BDNV-08 | 1/2" Bi-Directional Needle Valve |
| BDNV-12 | 3/4" Bi-Directional Needle Valve |
| BDNV-16 | 1" Bi-Directional Needle Valve |



UDBV - UNI-DIRECTIONAL BARREL FLOW CONTROL VALVE

| Part No | Description |
|----------------|--|
| UDBV-04 | 1/4" Uni-Directional Barrel Flow Control Valve |
| UDBV-06 | 3/8" Uni-Directional Barrel Flow Control Valve |
| UDBV-08 | 1/2" Uni-Directional Barrel Flow Control Valve |
| UDBV-12 | 3/4" Uni-Directional Barrel Flow Control Valve |
| UDBV-16 | 1" Uni-Directional Barrel Flow Control Valve |

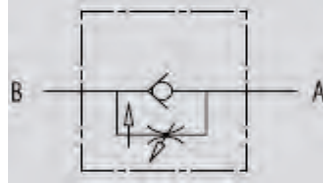


African
Hose
Solutions

INLINE COMPONENTS

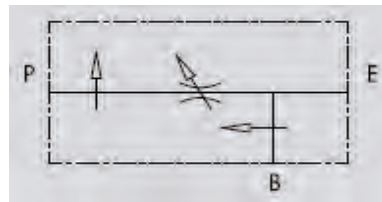
UDNVCOMP - UNI-DIRECTIONAL NEEDLE VALVE - PRESSURE COMPENSATED

| Part No | Description |
|--------------------|--|
| UDNV-04COMP | 1/4" Uni-Directional Needle Valve - Pressure Compensated |
| UDNV-06COMP | 3/8" Uni-Directional Needle Valve - Pressure Compensated |
| UDNV-08COMP | 1/2" Uni-Directional Needle Valve - Pressure Compensated |



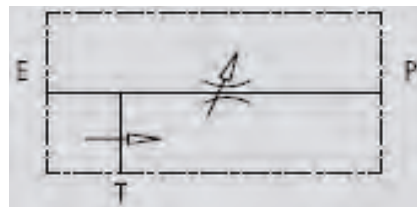
VPR3 - 3 PORT FLOW CONTROL VALVE - ONGOING PRESSURE LINE

| Part No | Description |
|----------------|--|
| VPR3-06 | 3/8" Three Port Flow Control Valve - Ongoing Pressure Line |
| VPR3-08 | 1/2" Three Port Flow Control Valve - Ongoing Pressure Line |
| VPR3-12 | 3/4" Three Port Flow Control Valve - Ongoing Pressure Line |
| VPR3-16 | 1" Three Port Flow Control Valve - Ongoing Pressure Line |



RFP3 - THREE PORT FLOW CONTROL VALVE - EXCESS TO TANK

| Part No | Description |
|-------------------|--|
| RFP3-06 | 3/8" Three Port Flow Control Valve - Excess to Tank |
| RFP3-08 | 1/2" Three Port Flow Control Valve - Excess to Tank |
| RFP3-12 | 3/4" Three Port Flow Control Valve - Excess to Tank |
| RFP3-12VMP | 3/4" Three Port Flow Control Valve - Excess to Tank + Relief Valve |

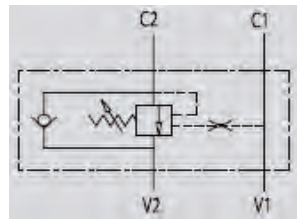


African
Hose
Solutions

INLINE COMPONENTS

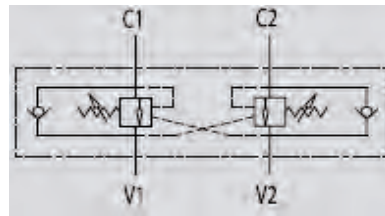
SOCV - SINGLE OVER CENTRE VALVE

| Part No | Description |
|----------------|-------------------------------|
| SOCV-04 | 1/4" Single Over Centre Valve |
| SOCV-06 | 3/8" Single Over Centre Valve |
| SOCV-08 | 1/2" Single Over Centre Valve |
| SOCV-12 | 3/4" Single Over Centre Valve |



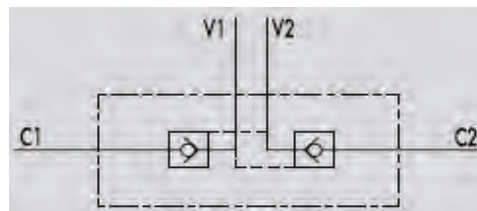
DOCV - DOUBLE OVER CENTRE VALVE

| Part No | Description |
|----------------|-----------------------------|
| DOCV-06 | 3/8" Dual Over Centre Valve |
| DOCV-08 | 1/2" Dual Over Centre Valve |
| DOCV-12 | 3/4" Dual Over Centre Valve |



VBPDE - DOUBLE PILOT OPERATED CHECK VALVE

| Part No | Description |
|-----------------|--|
| VBPDE-06 | 3/8" Double Pilot Operated Check Valve |
| VBPDE-08 | 1/2" Double Pilot Operated Check Valve |
| VBPDE-12 | 3/4" Double Pilot Operated Check Valve |

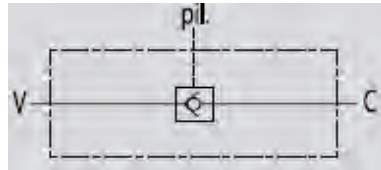


African
Hose
Solutions

INLINE COMPONENTS

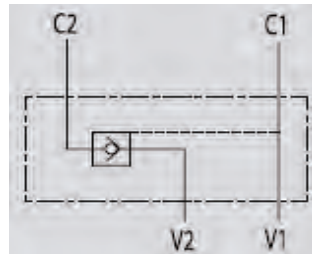
VBPSL - SINGLE PILOT OPERATED CHECK VALVE - 1 LINE

| Part No | Description |
|-----------------|---|
| VBPSL-04 | 1/4" Single Pilot Operated Check Valve - 1 Line |
| VBPSL-06 | 3/8" Single Pilot Operated Check Valve - 1 Line |
| VBPSL-08 | 1/2" Single Pilot Operated Check Valve - 1 Line |
| VBPSL-12 | 3/4" Single Pilot Operated Check Valve - 1 Line |



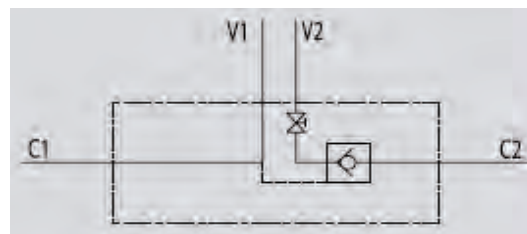
VBPSE - SINGLE PILOT OPERATED CHECK VALVE - 2 LINES

| Part No | Description |
|-----------------|--|
| VBPSE-04 | 1/4" Single Pilot Operated Check Valve - 2 Lines |
| VBPSE-06 | 3/8" Single Pilot Operated Check Valve - 2 Lines |
| VBPSE-08 | 1/2" Single Pilot Operated Check Valve - 2 Lines |
| VBPSE-12 | 3/4" Single Pilot Operated Check Valve - 2 Lines |



VBPSEMSO - SINGLE PILOT OPERATED CHECK VALVE WITH MANUAL SHUT OFF

| Part No | Description |
|--------------------|---|
| VBPSE-06MSO | 3/8" Single Pilot Operated Check Valve with Manual Shut Off |
| VBPSE-08MSO | 1/2" Single Pilot Operated Check Valve with Manual Shut Off |

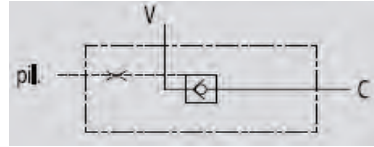


African
Hose
Solutions

INLINE COMPONENTS

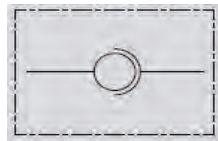
VBLSE - SINGLE PILOT OPERATED CHECK VALVE - HIGH PILOT

| Part No | Description |
|----------|---|
| VBLSE-06 | 3/8" Single Pilot Operated Check Valve - High Pilot |



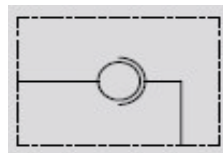
GGL - INLINE ROTATING COUPLINGS

| Part No | Description |
|---------|---------------------------------|
| GGL-04 | 1/4" Inline Rotating Coupling |
| GGL-06 | 3/8" Inline Rotating Coupling |
| GGL-08 | 1/2" Inline Rotating Coupling |
| GGL-12 | 3/4" Inline Rotating Coupling |
| GGL-16 | 1" Inline Rotating Coupling |
| GGL-20 | 1 1/4" Inline Rotating Coupling |
| GGL-24 | 1 1/2" Inline Rotating Coupling |
| GGL-32 | 2" Inline Rotating Coupling |



GGL90 - INLINE ROTATING COUPLINGS

| Part No | Description |
|----------|-------------------------------------|
| GGL90-04 | 1/4" 90° Inline Rotating Coupling |
| GGL90-06 | 3/8" 90° Inline Rotating Coupling |
| GGL90-08 | 1/2" 90° Inline Rotating Coupling |
| GGL90-12 | 3/4" 90° Inline Rotating Coupling |
| GGL90-16 | 1" 90° Inline Rotating Coupling |
| GGL90-20 | 1 1/4" 90° Inline Rotating Coupling |
| GGL90-24 | 1 1/2" 90° Inline Rotating Coupling |
| GGL90-32 | 2" 90° Inline Rotating Coupling |

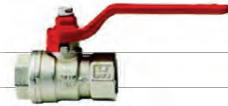


African
Hose
Solutions

INLINE COMPONENTS

111 - LOW PRESSURE BALL VALVE

| Part No | Description |
|---------|--|
| 111-06 | 1/4" Low Pressure Two Way Ball Valve |
| 111-10 | 3/8" Low Pressure Two Way Ball Valve |
| 111-15 | 1/2" Low Pressure Two Way Ball Valve |
| 111-20 | 3/4" Low Pressure Two Way Ball Valve |
| 111-25 | 1" Low Pressure Two Way Ball Valve |
| 111-32 | 1 1/4" Low Pressure Two Way Ball Valve |
| 111-40 | 1 1/2" Low Pressure Two Way Ball Valve |
| 111-50 | 2" Low Pressure Two Way Ball Valve |



MBV - MINI BALL VALVE

| Part No | Description |
|---------|----------------------|
| MBV-02 | 1/8" Mini Ball Valve |
| MBV-04 | 1/4" Mini Ball Valve |
| MBV-06 | 3/8" Mini Ball Valve |
| MBV-08 | 1/2" Mini Ball Valve |



NRVB - LOW PRESSURE CHECK VALVE

| Part No | Description |
|---------|---------------------------|
| NRVB-06 | 3/8" Europa Check Valve |
| NRVB-08 | 1/2" Europa Check Valve |
| NRVB-12 | 3/4" Europa Check Valve |
| NRVB-16 | 1" Europa Check Valve |
| NRVB-16 | 1" Europa Check Valve |
| NRVB-20 | 1 1/4" Europa Check Valve |
| NRVB-24 | 1 1/2" Europa Check Valve |



157 - LOW PRESSURE GATE VALVE

| Part No | Description |
|---------|-------------------------|
| 157-06 | 1/4" Brass Gate Valve |
| 157-10 | 3/8" Brass Gate Valve |
| 157-15 | 1/2" Brass Gate Valve |
| 157-20 | 3/4" Brass Gate Valve |
| 157-25 | 1" Brass Gate Valve |
| 157-32 | 1 1/4" Brass Gate Valve |
| 157-40 | 1 1/2" Brass Gate Valve |
| 157-50 | 2" Brass Gate Valve |



African
Hose
Solutions

PUMP ACCESSORIES

PF - PORT FLANGES

| Part No | Description |
|------------------|--|
| N-06-26 | 3/8" 90° BSP Port Flange - 26mm |
| N-06-30 | 3/8" 90° BSP Port Flange - 30mm |
| N-08-30 | 1/2" 90° BSP Port Flange - 30mm |
| N-08-40 | 1/2" 90° BSP Port Flange - 40mm |
| N-12-40 | 3/4" 90° BSP Port Flange - 40mm |
| N-12-51 | 3/4" 90° BSP Port Flange - 51mm |
| N-16-51 | 1" 90° BSP Port Flange - 51-56mm |
| N-16-62 | 1" 90° BSP Port Flange - 62mm |
| N-20-62 | 1 1/4" 90° BSP Port Flange - 62mm |
| N-20-72.5 | 1 1/4" 90° BSP Port Flange - 72.5mm |
| N-20-72.5 | 1 1/2" 90° BSP Port Flange - 72.5mm |
| T-06-35 | 3/8" 90° BSP Port Flange - 35mm |
| T-06-40 | 3/8" 90° BSP Port Flange - 40mm |
| T-08-35 | 1/2" 90° BSP Port Flange - 35mm |
| T-08-40 | 1/2" 90° BSP Port Flange - 40mm |
| T-12-35 | 3/4" 90° BSP Port Flange - 35mm |
| T-12-40 | 3/4" 90° BSP Port Flange - 40mm |
| T-16-40 | 1" 90° BSP Port Flange - 40mm |
| T-16X1.5-3510L | Straight Metric Port Flange (M16x1.5) - 35mm-10L |
| T-18X1.5-3512L | Straight Metric Port Flange (M18x1.5) - 35mm-12L |
| T-22X1.5-3515L | Straight Metric Port Flange (M22x1.5) - 35mm-15L |
| T-24X1.5-3516S | Straight Metric Port Flange (M24x1.5) - 35mm-16S |
| T-22X1.5-4015L | Straight Metric Port Flange (M22x1.5) - 40mm-15L |
| T-26X1.5-4018L | Straight Metric Port Flange (M26x1.5) - 40mm-18L |
| T-30X2-4022L | Straight Metric Port Flange (M30x2) - 40mm-22L |
| T-36X2-4028L | Straight Metric Port Flange (M36x2) - 40mm-28L |
| T90-16X1.5-3510L | 90° Metric Port Flange (M16x1.5) - 35mm-10L |
| T90-18X1.5-3512L | 90° Metric Port Flange (M18x1.5) - 35mm-12L |
| T90-22X1.5-3515L | 90° Metric Port Flange (M22x1.5) - 35mm-15L |
| T90-24X1.5-3516S | 90° Metric Port Flange (M24x1.5) - 35mm-16S |
| T90-22X1.5-4015L | 90° Metric Port Flange (M22x1.5) - 40mm-15L |
| T90-26X1.5-4018L | 90° Metric Port Flange (M26x1.5) - 40mm-18L |
| T90-30X2-4022L | 90° Metric Port Flange (M30x2) - 40mm-22L |
| T90-36X2-4028L | 90° Metric Port Flange (M36x2) - 40mm-28L |
| T90-30X2-4020S | 90° Metric Port Flange (M30x2) - 40mm-20S |



*N - Diamond Ports

*T - Square Ports

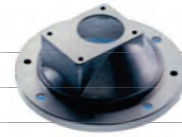


African
Hose
Solutions

PUMP ACCESSORIES

BH - BELL HOUSINGS

| Part No | Description |
|-----------------|---|
| BH1-140 | Bell Housing Group 1 - (140mm) - 0.12-0.18kW |
| BH1-160 | Bell Housing Group 1 - (160mm) - 0.25-0.37kW |
| BH1-200 | Bell Housing Group 1 - (200mm) - 0.55-1.50kW |
| BH1-250 | Bell Housing Group 1 - (250mm) - 2.20-4.00kW |
| BH2-160 | Bell Housing Group 2 - (160mm) - 0.25-0.37kW |
| BH2-200 | Bell Housing Group 2 - (200mm) - 0.55-1.50kW |
| BH2-250 | Bell Housing Group 2 - (250mm) - 2.20-4.00kW |
| BH2-300 | Bell Housing Group 2 - (300mm) - 5.50-9.00kW |
| BH2-350 | Bell Housing Group 2 - (350mm) - 11.00-22.00kW |
| BH3-250 | Bell Housing Group 3 - (250mm) - 2.20-4.00kW |
| BH3-300 | Bell Housing Group 3 - (300mm) - 5.50-9.00kW |
| BH3-350 | Bell Housing Group 3 - (350mm) - 11.00-22.00kW |
| BHPB-200 | Bell Housing Pilot Bore - (200mm) - 0.55-1.50kW |
| BHPB-250 | Bell Housing Pilot Bore - (250mm) - 2.20-4.00kW |
| BHPB-300 | Bell Housing Pilot Bore - (300mm) - 5.50-9.00kW |
| BHPB-350 | Bell Housing Pilot Bore - (350mm) - 11.00-22.00kW |
| BHPB-400 | Bell Housing Pilot Bore - (400mm) - 30.00kW |



DC - DRIVE COUPLINGS

| Part No | Description |
|------------------|---|
| DC1-14 | Drive Coupling Group 1 - (14mm) - 0.25-0.37kW |
| DC1-19 | Drive Coupling Group 1 - (19mm) - 0.55-0.75kW |
| DC1-24 | Drive Coupling Group 1 - (24mm) - 1.10-1.50kW |
| DC1-28 | Drive Coupling Group 1 - (28mm) - 2.20-4.00kW |
| DC2-19 | Drive Coupling Group 2 - (19mm) - 0.55-0.75kW |
| DC2-24 | Drive Coupling Group 2 - (24mm) - 1.10-1.50kW |
| DC2-28 | Drive Coupling Group 2 - (28mm) - 2.20-4.00kW |
| DC2-38 | Drive Coupling Group 2 - (38mm) - 5.50-9.00kW |
| DC2-42 | Drive Coupling Group 2 - (42mm) - 11.00-15.00kW |
| DC2-48 | Drive Coupling Group 2 - (48mm) - 18.50-22.00kW |
| DC3-28 | Drive Coupling Group 3 - (28mm) - 2.20-4.00kW |
| DC3-38 | Drive Coupling Group 3 - (38mm) - 5.50-9.00kW |
| DC3-42 | Drive Coupling Group 3 - (42mm) - 11.00-15.00kW |
| DC3-48 | Drive Coupling Group 3 - (48mm) - 18.50-22.00kW |
| SPIDER45 | 45mm Outer Diameter |
| SPIDER55 | 55mm Outer Diameter |
| SPIDER74 | 74mm Outer Diameter |
| SPIDER104 | 104mm Outer Diameter |



African
Hose
Solutions

TANK ACCESSORIES

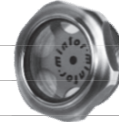
PL/T - LEVEL GAUGES

| Part No | Description |
|---------------|---|
| PL76 | 76mm Vertical Level Indicator |
| PL127 | 127mm Vertical Level Indicator |
| PL255 | 255mm Vertical Level Indicator |
| PLT76 | 76mm Vertical Level Indicator with Thermometer |
| PLT127 | 127mm Vertical Level Indicator with Thermometer |
| PLT255 | 255mm Vertical Level Indicator with Thermometer |



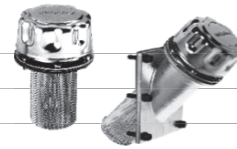
TLA - SIGHT GLASSES

| Part No | Description |
|---------------|--------------------|
| TLA-04 | 1/4" Sight Glass |
| TLA-06 | 3/8" Sight Glass |
| TLA-08 | 1/2" Sight Glass |
| TLA-12 | 3/4" Sight Glass |
| TLA-16 | 1" Sight Glass |
| TLA-20 | 1 1/4" Sight Glass |



TCAR - FILLING PLUGS

| Part No | Description |
|----------------|-----------------------|
| TCARI | Inclined Filling Plug |
| TCAR-80 | 80mm Filling Plug |
| TCAR-46 | 46mm Filling Plug |



TCF - FILLING PLUG WITH BREATHER

| Part No | Description |
|---------------|---------------------------------|
| TCF-12 | 3/4" Filling Plug with Breather |



FMC - MAGNETIC FILTER ROD

| Part No | Description |
|---------------|--------------------------|
| FMC-06 | 3/8" Magnetic Filter Rod |
| FMC-08 | 1/2" Magnetic Filter Rod |
| FMC-12 | 3/4" Magnetic Filter Rod |



African
Hose
Solutions

SOLENOID VALVES

FT3 - NG6 SOLENOID VALVES

| Part No | Description |
|------------|--|
| FT3-ES-2LL | Single Solenoid [P to A; B & T Blocked] |
| FT3-ES-1ML | Single Solenoid [Closed Centre] |
| FT3-ES-4ML | Single Solenoid [A+B Blocked; P to T "Tandem" Spool] |
| FT3-ES-0C | Double Solenoid [Open Centre "H" Spool] |
| FT3-12V | 12 Volt DC Coil |
| FT3-24V | 24 Volt DC Coil |
| FT3-115V | 110 Volt AC Coil |
| FT3-230V | 230 Volt AC Coil |



FT3 - NG6 STACKABLE VALVES

| Part No | Description |
|-----------|---|
| FT3-CP-A | Pilot Check Valve on A [Flow blocked from A1 to A, Free on B] |
| FT3-CP-B | Pilot Check Valve on B [Flow blocked from B1 to B, Free on A] |
| FT3-CP-AB | Double Pilot Check on A & B [Flow blocked from A1 to A and B1 to B] |
| FT3-FX-A | Throttle Check Valve on A [Flow is controlled from A to A1, free on B] |
| FT3-FX-B | Throttle Check Valve on B [Flow is controlled from B to B1, free on A] |
| FT3-FC-A | Throttle Check Valve on A [Flow is controlled from A1 to A, free on B] |
| FT3-FC-B | Throttle Check Valve on B [Flow is controlled from B1 to B, free on A] |
| FT3-FC-AB | Double Throttle Check Valve - [Flow is controlled from A1 to A, B1 to B] |
| FT3-RO-A | Pressure Reducing on 'A' - Drain to 'T' |
| FT3-RO-B | Pressure Reducing on 'B' - Drain to 'T' |
| FT3-RO-P | Pressure Reducing on 'P' - Drain to 'T' |
| FT3-MP-B | Pressure Relief Pilot Operated - Relief on 'B' and discharge to 'T' |
| FT3-MP-BA | Pressure Relief Pilot Operated - Relief on 'B' and 'A' - Discharge to 'T' |
| FT3-MP-AB | Pressure Relief Pilot Operated - Relief on 'B' and 'A' - Cross Discharge |
| FT3-CO-AB | One Way FCV - Flow Blocked from A1 to A - free on 'P' and 'T' |
| FT3-CO-B | One Way FCV - Flow Blocked from B1 to B - free on 'A', 'P' and 'T' |
| FT3-MO-P | One Way FCV - Pilot Operated - Relief on 'P' and discharge to 'T' |
| FT3-MP-P | Pressure Relief Pilot Operated - Relief on 'P' and discharge to 'T' |



FT3 - NG6 MANIFOLD BLOCKS

| Part No | Description |
|----------|--------------|
| NG6-4MAN | Four Station |



African
Hose
Solutions

SOLENOID VALVES

FT5 - NG10 SOLENOID VALVES

| Part No | Description |
|-------------------|---|
| FT5-ES-0ML | Single Solenoid: Open Centre ["H" Spool] |
| FT5-ES-1ML | Single Solenoid: Closed Centre |
| FT5-ES-4ML | Single Solenoid: [A+B Blocked; P to T] - Tandem Spool |
| FT5-ES-0C | Double Solenoid: Open Centre ["H" Spool] |
| FT5-12V | 12 Volt DC Coil |
| FT5-24V | 24 Volt DC Coil |
| FT5-115V | 110 Volt AC Coil |
| FT5-230V | 230 Volt AC Coil |



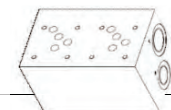
FT5 - NG10 STACKABLE VALVES

| Part No | Description |
|------------------|--|
| FT5-CP-A | Pilot Check Valve on A [Flow blocked from A1 to A, free on B] |
| FT5-CP-B | Pilot Check Valve on B [Flow blocked from B1 to B, free on A] |
| FT5-CP-AB | Double Pilot Check on A & B [Flow blocked from A1 to A and B1 to B] |
| FT5-FX-A | Throttle Check Valve on A [Flow is controlled from A to A1, free on B] |
| FT5-FX-B | Throttle Check Valve on B [Flow is controlled from B to B1, free on A] |
| FT5-FX-AB | Double Throttle Check Valve - [Flow is controlled from A to A1, B to B1] |
| FT5-FC-A | Throttle Check Valve on A [Flow is controlled from A1 to A, free on B] |
| FT5-FC-B | Throttle Check Valve on B [Flow is controlled from B1 to B, free on A] |
| FT5-FC-AB | Double Throttle Check Valve - [Flow is controlled from A1 to A, B1 to B] |
| FT5-MP-P | Pressure Relief Pilot Operated - Relief on 'P' and discharge to 'T' |
| FT5-CO-AB | One Way FCV - Flow Blocked from A1 to A - free on 'P' and 'T' |
| FT5-CO-B | One Way FCV - Flow Blocked from B1 to B - free on 'A' , 'P' and 'T' |
| FT5-CO-P | One Way FCV - Flow Blocked from P1 to P - free on 'A' , 'B' and 'T' |



FT5 - NG10 MANIFOLD BLOCKS

| Part No | Description |
|------------------|-----------------------|
| NG10-2MAN | Two Station |
| NG10-3MAN | Three Station |
| NG10-4MAN | Four Station |
| MRSK5-08 | 1/2" Single Sub Plate |

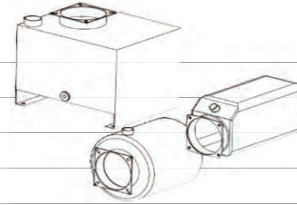


African
Hose
Solutions

TANKS

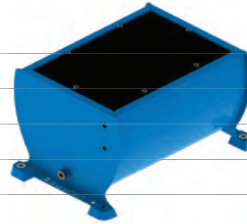
FOR MINI POWERPACKS

| Part No | Description |
|------------------|---|
| E60303006 | 5l Cylindrical Steel Tank for Mini Powerpack |
| E60303011 | 10l Cylindrical Steel Tank for Mini Powerpack |
| E60303012 | 12l Cylindrical Steel Tank for Mini Powerpack |
| E60303015 | 20l Vertical Square Steel Tank Mini Powerpack |
| E60303048 | 30l Vertical Square Steel Tank for Mini Powerpack |
| H60303025 | 5l Square Plastic Tank 170mm Mini Powerpack |
| H60303033 | 8l Square Plastic Tank 170mm Mini Powerpack |



RECTANGULAR TANKS

| Part No | Description |
|-------------------|--|
| 10LTR-ESM | 10 Litre Hydraulic Oil Tank - Rectangular |
| 18LTR-ESM | 18 Litre Hydraulic Oil Tank - Rectangular |
| 25LTR-ESM | 25 Litre Hydraulic Oil Tank - Rectangular |
| 40LTR-ESM | 40 Litre Hydraulic Oil Tank - Rectangular |
| 60LTR-ESM | 60 Litre Hydraulic Oil Tank - Rectangular |
| 80LTR-ESM | 80 Litre Hydraulic Oil Tank - Rectangular |
| 100LTR-ESM | 100 Litre Hydraulic Oil Tank - Rectangular |



POWER PACKS



Power Packs Available on request

Designed and Manufactured to customer requirements and specifications



African
Hose
Solutions